

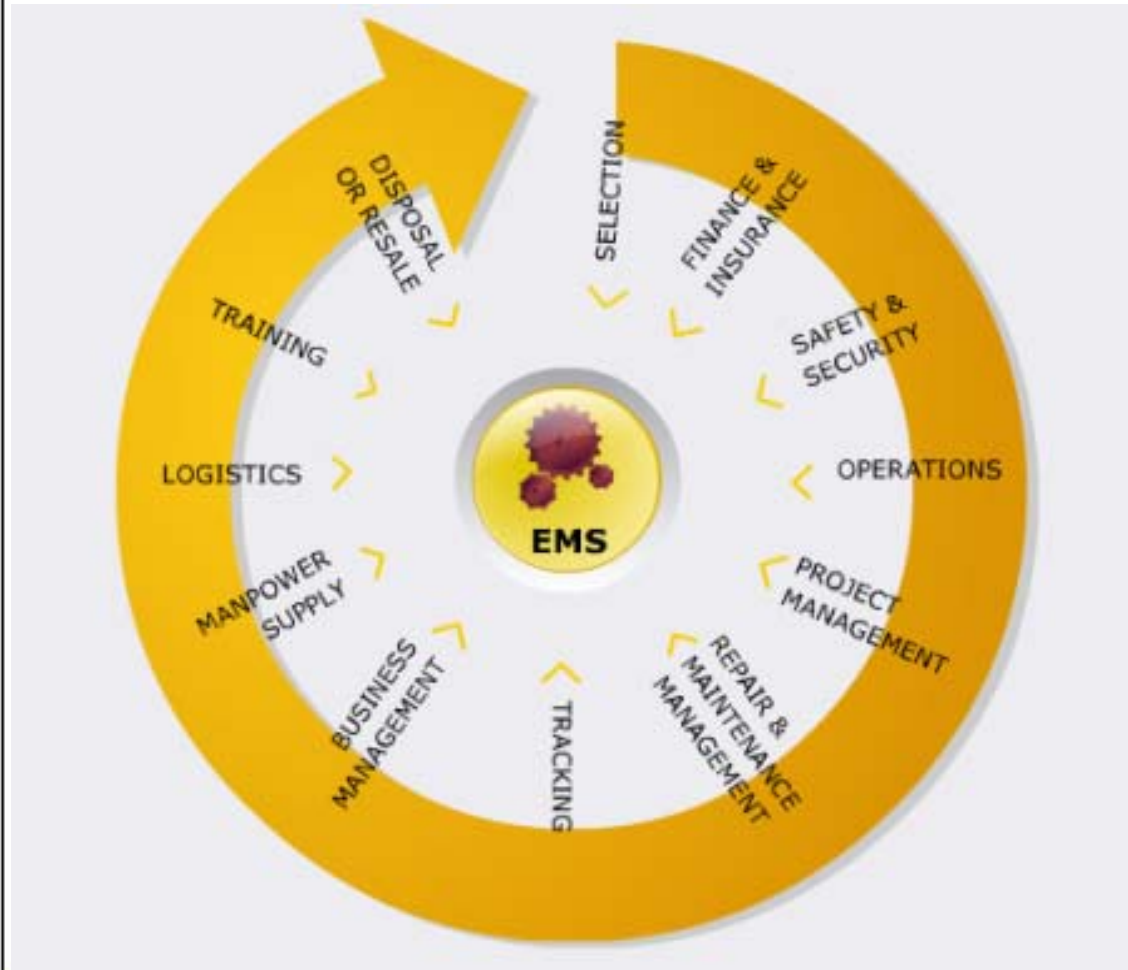
- **Optimizing the Life Cycle  
of Your Equipment**

**Product Support**

**Caterpillar. The difference counts.™**

**CATERPILLAR®**

# Managing your Equipment Life Cycle...



Helps you get  
the most out of  
your equipment!

Product Support

**Caterpillar. The difference counts.**

# Life Cycle Management Process

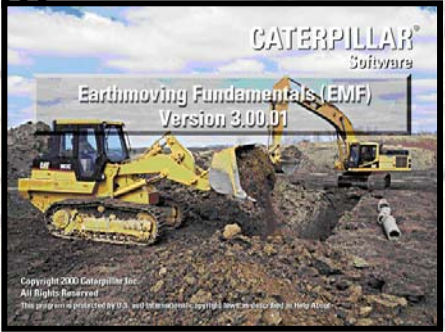
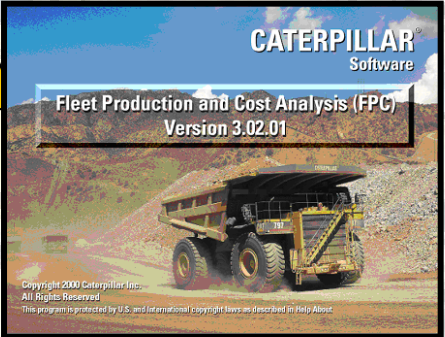
---

1. Equipment Selection
2. Ownership Plan Construction
3. Distribution of Roles, Responsibilities & Risk
4. Managing the Equipment to the Plan
5. Equipment Evaluation for Replacement, Repair or Rebuild
6. Repeat the Cycle

# Equipment Selection

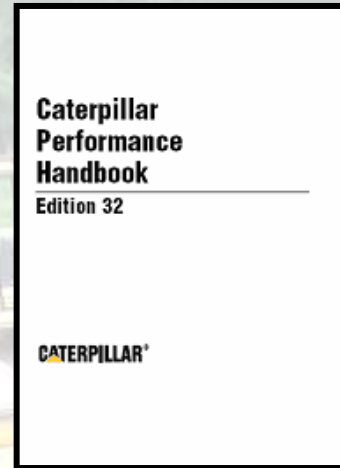
- Identify the Industry (ex. mining)
- Identify Site Emissions Requirements
- Determine Application
- Identify Environment (ex. elevation)
- Determine Production Needs

Caterpillar Dealers, enabled with software systems, can consult on selecting the right equipment for the job (FPC, EIA...) (Business)



# Construct Ownership Plan

- Determine annual operating hours
- Determine scheduled hours of operation
- Length of ownership
- Constructing a lifecycle plan, Owing & Operating costs and ownership plans.
- Determine Owing & Operating Cost (ex. CCR, RPO)



# Determine Roles, Responsibilities & Risk

➤ Who will perform PM Services?

➤ Who will perform system re

➤ Who will perform

➤ Who will

for

Caterpillar Dealers can help by consulting on products and services information like Maintenance Product specifications, and on information systems such as Customer SIS, Customer ET, MCS, TA2 or PM inspections SOS services, Product Link Fault Codes, Contamination Control Procedures, VIMS data, Failure Analysis, tech. Training, PM and TM & R CSAs.

& Management of backlogs



# Management the Equipment to plan

- Transport & deliver machine to site
- Train operators
- Enroll Equipment in Maintenance
- Establish a process to
- Establish relationships
- for parts

Caterpillar dealers can help by providing equipment transport & setup, operator training, suggest a maintenance plan, product link for SMU and location gathering, Parts Logistics Services, Product Support representatives, Condition Monitoring Services, projected owning and operating costs in form of a CSAs.

...ing & operating cost  
...or ownership plan completion



Product Support

Caterpillar. The difference counts.

# Repair, Rebuild, Replace

- Perform total machine inspection when ownership plan
- Determine if equipment
- Determine

Caterpillar Dealers can help by providing machine inspection, level 2 technical analysis, equipment technology reviews, residual value projections, estimates of rebuild and repair costs, and assistance in creating ownership plan.

**CAT** Certified Rebuild

The screenshot displays the TA2 software interface. The 'Header Information' section includes fields for Serial Number, Model, Dealer Code, Manufacturer, Inspector, Work Order, Customer, Date, and SMU. The 'Select a Product Family' dropdown is set to 'Off Highway Truck'. The main table shows a list of engine-related inspection items with columns for Description, Units, Observation, Specification, Tolerance, and Status. The 'TA2' logo is visible in the bottom right corner of the software window.

Description	Units	Observation	Specification	Tolerance	Status
Engine Oil Pressure Low Idle (psi)	0.00	0.00	0.00	0.00	0.00
Engine Oil Pressure High Idle (psi)	0.00	0.00	0.00	0.00	0.00
Manifold Boost Pressure (in hgp)	0.00	0.00	0.00	0.00	0.00
Low Idle (rpm)	0.00	0.00	0.00	0.00	0.00
High Idle (rpm)	0.00	0.00	0.00	0.00	0.00
Engine Set Point (rpm)	0.00	0.00	0.00	0.00	0.00
Hydraulic Fan (rpm)	0.00	0.00	0.00	0.00	0.00

Product Support

Caterpillar. The difference counts.



Consider outsourcing all or some of your Maintenance and Repair processes to Caterpillar and focus instead on production and utilization.

Product Support

**Caterpillar. The difference counts.**